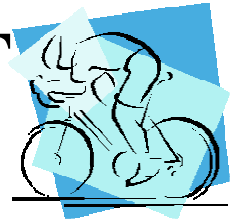




SK SKIVELO DEAF

Jungmannova 25, 77200 Olomouc
phone: +420 777 959 722, sms: +420 777 854 328
E-mail: skivelodeaf@gmail.com, www.skivelo.olnet.cz



OPEN MTB DEAF CHAMPIONSHIP OF THE CZECH REPUBLIC IN 2013

Saturday 22nd June 2013, Belkovice – Lastany, Olomouc



Czech Federation Deaf Athletes in cooperation with the sports club SKIVELO Olomouc organizes international Deaf Championship MTB.

Information

Organizer: SK SKIVELO DEAF

Director of the race: Mgr. Ota Panský

Place of the race: Bělkovice - Lašřany, district Olomouc

Registration fee: 15 €

Applications: please sent via e-mail to: skivelodeaf@gmail.com

Accommodation is available at: <http://ubytovani.pampeliska.cz/belkovice-lastany/>

In the case of your interest, please contact us, we are ready to help you with booking.

We could also provide other accommodation near Olomouc as well.

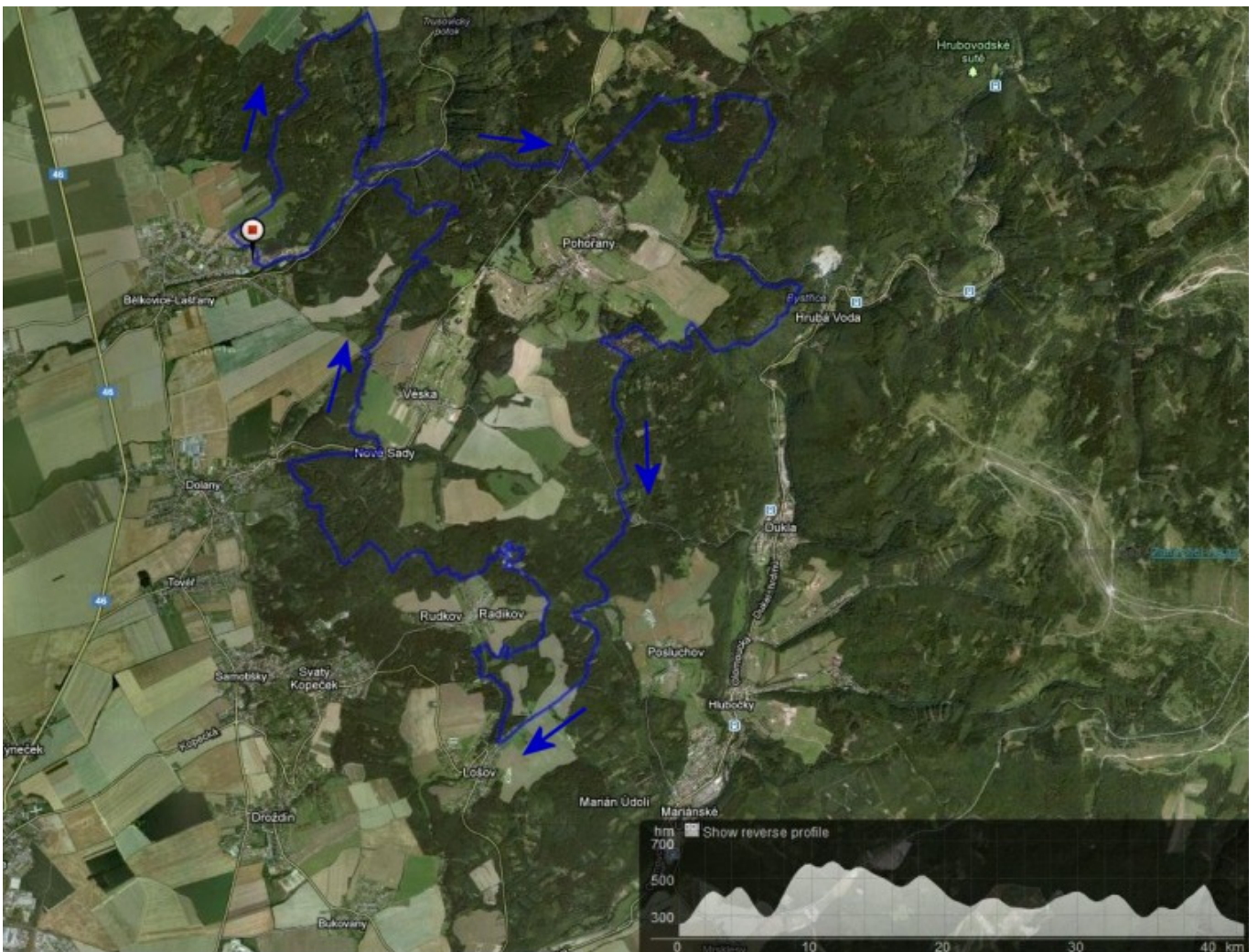
Programme:

Start: at 12 P.M.

Race description: The race is held on forest roads, the track is clearly marked.

Race Length: 40 km, total elevation difference 1400 m.

Maps of the race, place: Bělkovice Lašťany



The purpose of the track is to offer adrenaline and experience of the technical ride in a real terrain. The main role of the race play the technique and the capability to manage traps of terrain and not the amount of kilometres already completed by a participant. Health service will be available in the course of the whole race to make the facilities for participants of the race complex. This race could be considered as an opportunity to experience different type of terrain, which is more demanding and exciting, as well as an opportunity to experience more joy, satisfaction and euphoria resulting from completing this race. You can feel the real MTB here.